

Installation Guide



Copyright (c) 2007 by Alfresco and others.

Information in this document is subject to change without notice. No part of this document may be reproduced or transmitted in any form or by any means, electronic or mechanical, for any purpose, without the express written permission of Alfresco. The trademarks, service marks, logos or other intellectual property rights of Alfresco and others used in this documentation ("Trademarks") are the property of Alfresco and their respective owners. The furnishing of this document does not give you license to these patents, trademarks, copyrights or other intellectual property except as expressly provided in any written agreement from Alfresco.

The United States export control laws and regulations, including the Export Administration Regulations of the U.S. Department of Commerce, and other applicable laws and regulations apply to this documentation which prohibit the export or re-export of content, products, services, and technology to certain countries and persons. You agree to comply with all export laws, regulations and restrictions of the United States and any foreign agency or authority and assume sole responsibility for any such unauthorized exportation.

You may not use this documentation if you are a competitor of Alfresco, except with Alfresco's prior written consent. In addition, you may not use the documentation for purposes of evaluating its functionality, or for any other competitive purposes.

If you need technical support for this product, contact Customer Support by email at support@alfresco.com . If you have comments or suggestions about this documentation, contact us at documentation@alfresco.com.

This edition applies to version 2.0.x of the licensed program.

Contents

| | |
|---|------------|
| Before you start..... | vii |
| Introduction..... | vii |
| Target audiences..... | vii |
| Typographic conventions..... | vii |
| Command conventions..... | viii |
| System paths..... | viii |
| Hardware requirements..... | ix |
| Disk space..... | ix |
| Frequently occurring tasks..... | ix |
| Opening a DOS window..... | ix |
| Running batch files in DOS windows..... | x |
| Adding folder paths to the Windows Path variable..... | xi |
| 1 Tomcat on Windows XP..... | 1 |
| Installing JDK..... | 1 |
| Downloading JDK..... | 1 |
| Installing JDK..... | 1 |
| HSQL database..... | 2 |
| Optional installation of MySQL..... | 2 |
| Downloading MySQL..... | 2 |
| Installing MySQL..... | 2 |
| Testing MySQL..... | 5 |
| Downloading and installing Alfresco..... | 6 |
| Downloading Alfresco..... | 6 |
| Installing Alfresco..... | 6 |
| Optionally creating the MySQL database..... | 6 |
| Possible problems..... | 7 |
| Configuring the database connection and data locations..... | 7 |
| Starting and stopping Alfresco..... | 7 |
| Using the CIFS server..... | 8 |
| Enabling image manipulation..... | 8 |
| Installing OpenOffice..... | 9 |
| Downloading OpenOffice..... | 9 |
| Installing OpenOffice..... | 9 |
| Installing WCM..... | 10 |
| 2 JBoss on Windows XP..... | 11 |
| Installing JDK..... | 11 |
| Downloading JDK..... | 11 |
| Installing JDK..... | 11 |
| HSQL database..... | 12 |
| Optional installation of MySQL..... | 12 |
| Downloading MySQL..... | 12 |
| Installing MySQL..... | 12 |
| Testing MySQL..... | 15 |
| Downloading and installing Alfresco..... | 16 |
| Downloading Alfresco..... | 16 |

| | |
|---|-----------|
| Installing Alfresco..... | 16 |
| Optionally creating the MySQL database..... | 16 |
| Possible problems..... | 17 |
| Configuring the database connection and data locations..... | 17 |
| Starting and stopping Alfresco..... | 17 |
| Using the CIFS server..... | 18 |
| Enabling image manipulation..... | 18 |
| Installing OpenOffice..... | 19 |
| Downloading OpenOffice..... | 19 |
| Installing OpenOffice..... | 19 |
| Installing WCM..... | 20 |
| 3 Tomcat on Linux..... | 21 |
| Prerequisites..... | 21 |
| Installing JDK..... | 21 |
| Downloading JDK..... | 21 |
| Installing JDK..... | 21 |
| HSQL database..... | 22 |
| Optional installation of MySQL..... | 22 |
| Downloading MySQL..... | 22 |
| Installing MySQL..... | 22 |
| Testing MySQL..... | 22 |
| Downloading and installing Alfresco..... | 23 |
| Downloading Alfresco..... | 23 |
| Installing Alfresco..... | 23 |
| Setting paths..... | 24 |
| Optionally creating the MySQL database..... | 24 |
| Configuring the database connection and data locations..... | 24 |
| Starting and stopping Alfresco..... | 25 |
| Using the CIFS server..... | 25 |
| Enabling image manipulation..... | 26 |
| Installing OpenOffice..... | 26 |
| Downloading OpenOffice..... | 26 |
| Installing Open Office..... | 26 |
| Installing WCM..... | 26 |
| 4 JBoss on Linux..... | 27 |
| Prerequisites..... | 27 |
| Installing JDK..... | 27 |
| Downloading JDK..... | 27 |
| Installing JDK..... | 27 |
| HSQL database..... | 28 |
| Optional installation of MySQL..... | 28 |
| Downloading MySQL..... | 28 |
| Installing MySQL..... | 28 |
| Testing MySQL..... | 29 |
| Downloading and installing Alfresco..... | 29 |
| Downloading Alfresco..... | 29 |

| | |
|---|-----------|
| Installing Alfresco..... | 29 |
| Setting paths..... | 30 |
| Optionally creating the MySQL database..... | 30 |
| Configuring the database connection and data locations..... | 30 |
| Starting and stopping Alfresco..... | 31 |
| Using the CIFS server..... | 31 |
| Enabling image manipulation..... | 32 |
| Installing OpenOffice..... | 32 |
| Downloading OpenOffice..... | 32 |
| Installing Open Office..... | 32 |
| Installing WCM..... | 32 |
| 5 Tomcat on Mac OS X..... | 33 |
| Prerequisites..... | 33 |
| Installing JDK..... | 33 |
| Downloading JDK..... | 33 |
| Installing JDK..... | 33 |
| HSQL database..... | 34 |
| Optional installation of MySQL..... | 34 |
| Downloading MySQL..... | 34 |
| Installing MySQL..... | 34 |
| Testing MySQL..... | 34 |
| Downloading and installing Alfresco..... | 35 |
| Downloading Alfresco..... | 35 |
| Installing Alfresco..... | 35 |
| Setting paths..... | 36 |
| Optionally creating the MySQL database..... | 36 |
| Configuring the database connection and data locations..... | 36 |
| Starting and stopping Alfresco..... | 37 |
| Using the CIFS server..... | 37 |
| Enabling image manipulation..... | 38 |
| Installing OpenOffice..... | 38 |
| Downloading OpenOffice..... | 38 |
| Installing Open Office..... | 38 |
| Installing WCM..... | 38 |
| 6 JBoss on Mac OS X..... | 39 |
| Prerequisites..... | 39 |
| Installing JDK..... | 39 |
| Downloading JDK..... | 39 |
| Installing JDK..... | 39 |
| HSQL database..... | 40 |
| Optional installation of MySQL..... | 40 |
| Downloading MySQL..... | 40 |
| Installing MySQL..... | 40 |
| Testing MySQL..... | 40 |
| Installing Alfresco..... | 41 |
| Downloading Alfresco..... | 41 |

| | |
|---|-----------|
| Installing Alfresco..... | 41 |
| Setting paths..... | 42 |
| Optionally creating the MySQL database..... | 42 |
| Configuring the database connection and data locations..... | 42 |
| Starting and stopping Alfresco..... | 43 |
| Setting up the CIFS server..... | 43 |
| Enabling image manipulation..... | 44 |
| Installing OpenOffice..... | 44 |
| Downloading OpenOffice..... | 44 |
| Installing Open Office..... | 44 |
| Installing WCM..... | 45 |
| 7 WAR file on any platform..... | 46 |
| Installing JDK..... | 46 |
| Downloading JDK..... | 46 |
| Installing JDK..... | 46 |
| HSQL database..... | 47 |
| Optional installation of MySQL..... | 47 |
| Downloading MySQL..... | 47 |
| Installing MySQL..... | 47 |
| Testing MySQL..... | 47 |
| Downloading and installing Alfresco..... | 48 |
| Deleting previous web client files..... | 48 |
| Downloading Alfrescod..... | 48 |
| Installing Alfresco..... | 49 |
| Adding additional required libraries..... | 49 |
| Adding MySQL database connector..... | 49 |
| Creating the MySQL database..... | 49 |
| Configuring the database connection and data locations..... | 50 |
| Trying Alfresco..... | 50 |
| Setting up the CIFS server..... | 50 |
| Enabling image manipulation..... | 51 |
| Installing OpenOffice..... | 51 |
| Installing OpenOffice..... | 51 |
| Installing WCM..... | 52 |
| 8 Installing WCM..... | 53 |
| Downloading and installing WCM..... | 53 |
| Downloading WCM..... | 53 |
| Installing WCM..... | 53 |
| Checking WCM functionality..... | 54 |
| Using the website preview feature..... | 54 |
| 9 Troubleshooting during installation..... | 55 |
| JAVA_HOME..... | 55 |
| Image Magick..... | 55 |
| FTP Socket error..... | 55 |

Before you start

Introduction

Alfresco and its supporting applications are open source, and are therefore easy to install: "Double-click the file name and follow the prompts". However, it is customary to provide an installation guide, so that is the purpose of this document.

This guide is intended to be understandable to any non-technical computer user.

Target audiences

This manual is aimed at anyone who wants to install Alfresco. Many non-technical people download Alfresco because it is known to be easy to install and customize. Non-technical people generally use the Windows operating system, so material in this manual that applies to Windows is more detailed than for Linux or Mac OS X.

Typographic conventions

The following conventions are used:

| Formatting convention | Type of Information |
|---|---|
| Triangular Bullet (➤) | Step-by-step procedures. You can follow these instructions to complete a specific task. |
| Bold | Used when referring to any item in the UI. This includes items you must select, such as menu options, command buttons, items in a list, and text that you type yourself. |
| monospace | Used to indicate almost anything that is not covered by Bold (see previous item). This includes file and path names, text that you type on the command line, standard output, code, and so on. |
| <hr/> Note: File and path names will be in bold if they appear in the UI, and monospace otherwise. <hr/> | |

| | |
|----------------|---|
| <i>Italics</i> | <ul style="list-style-type: none"> ● Used to emphasize importance. ● Used for variable expressions such as parameters. For example: <code>kill -9 <process_id></code> |
| CAPITALS | Names of keys on the keyboard. For example, SHIFT, CTRL, or ALT. |
| KEY+KEY | Key combinations for which you must press and hold down the first key and then press another, for example, CTRL+P, or ALT+F4. |

Command conventions

This document follows the usual convention for indicating a series of commands in succession. For example, the following command is seen often in Windows applications:

File > New > Document

This simply means:

1. On the menu bar, click **File**.
2. In the drop-down menu, click **New**.
3. In the further drop-down menu, click **Document**.

System paths

- If a Windows path is explicit, back slashes (\) are used. For example:
`c:\Alfresco`
- If a Linux path is explicit, forward slashes (/) are used. For example:
`/srv/Alfresco`
- If the same path can apply in both a Windows or Linux environment, back slashes are used. For example:
`<configRoot>\alfresco\`

Hardware requirements

Disk space

The following table shows the disk space that is needed for Alfresco and its supporting applications.

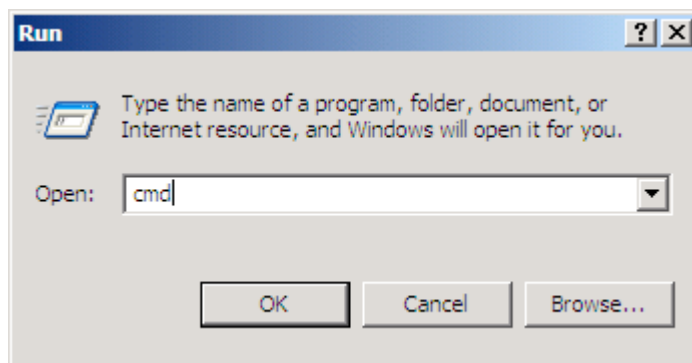
| <i>Software</i> | <i>Disk space</i> | <i>Comments</i> |
|-----------------|-------------------|---|
| Alfresco | 140 MB | Mandatory. |
| JDK | 60 MB | Mandatory. |
| MySQL | 80 MB | A database is mandatory. |
| OpenOffice | 245 MB | Optional. Alfresco uses OpenOffice to transform files from one format to another. For example, from Word to HTML; from PDF to text (very useful!); from HTML to XHTML; and so on. |

Frequently occurring tasks

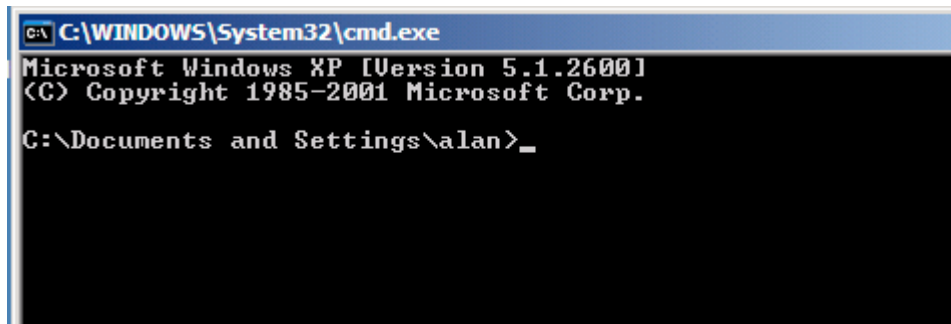
Opening a DOS window

➤ **To open a DOS window**

1. On your Windows task bar, click **Start > Run**
2. In the **Run** dialog box, type **cmd** (next figure).



The **Run** dialog box closes and a DOS window opens



```
C:\WINDOWS\System32\cmd.exe
Microsoft Windows XP [Version 5.1.2600]
(C) Copyright 1985-2001 Microsoft Corp.
C:\Documents and Settings\alan>_
```

Running batch files in DOS windows

In several places in this guide, you are asked to run a batch file. (A batch file is a Windows file with a BAT extension.)

The quickest way to run a batch file is to double-click the file name in Windows Explorer. A DOS window will be opened, and the program displays any output in the window. The window is closed on normal completion, or if the program is terminated abnormally by a DOS error. This abnormal termination is one of the disadvantages of the double-click method: the DOS window closes before you have time to see the error that caused the program to terminate. In cases where the error occurs at the start of the program, you will see the DOS window only momentarily.

If this happens, you can run the batch program by opening a DOS window yourself. As an example, later in this guide you will be asked to start Alfresco by running a file, `alf_start.bat`, which will be in the `c:\alfresco` folder. The following procedure shows the steps.

➤ To run a batch program in a DOS window

1. Open a DOS window (refer to "Opening a DOS window", above).
2. Type `cd c:\alfresco`
3. Press ENTER.

You know that you are looking for the `alf_start.bat` file. So you can check that you are in the correct directory:

4. Type `dir alf_*`
You will see a list of file names that begin with `alf_` (next figure).
5. Type `alf_start` (next figure).

```

C:\WINDOWS\System32\cmd.exe
Microsoft Windows XP [Version 5.1.2600]
(C) Copyright 1985-2001 Microsoft Corp.

C:\Documents and Settings\alan>cd c:\alfresco

C:\Alfresco>dir alf_*
Volume in drive C has no label.
Volume Serial Number is 7062-88E5

Directory of C:\Alfresco

16/03/2006  14:36    <DIR>          alf_data
09/03/2006  17:12                240 alf_start.bat
09/03/2006  17:12                238 alf_stop.bat
                2 File(s)          478 bytes
                1 Dir(s)    8,974,860,288 bytes free

C:\Alfresco>alf_start_

```

So in conclusion, you can try running a batch file by double-clicking. If there are no errors, and everything seems OK, proceed to the next instruction. But if you suspect that there may be error messages that you are unable to see because the window closes too quickly, then run the batch file in a DOS window.

Adding folder paths to the Windows Path variable

➤ To add a folder to the Windows Path variable

1. On the Windows desktop, right-click on the **My Computer** icon.
2. In the pop-up menu, click **Properties**.
3. In the **System Properties** dialog, click the **Advanced** tab.
4. Click **Environment Variables**.
5. In the **System Variables** pane, highlight **Path**. Click **Edit**.
6. In the **Edit System Variable** dialog, insert the cursor at the end of the **Variable value** field.
7. If the current last character is not ";", then add ";".
8. Type **path** followed by the full path to the file that you want Windows to find.

For example:

path C:\Program Files\Microsoft Office\Office

9. Click **OK**.
10. Click **OK**.
11. Click **OK**.

The path that you have just entered does not become active until the next time that Windows starts. So you can either restart windows, or (possibly quicker) you can insert a temporary path that will remain till Windows is shut down.

➤ **To insert a temporary path**

1. Open a DOS command window (refer to "Running batch files in DOS windows" on page 10).
2. Type `path` followed by the full path to the file that you want Windows to find.

For example:

```
path C:\Program Files\Microsoft Office\Office
```

3. Press ENTER.

1 Tomcat on Windows XP

The procedures in this chapter show you how to install Alfresco bundled with Tomcat.

Installing JDK

If you have already downloaded any of the software discussed in this section, ignore the instructions and continue to the next step.

Downloading JDK

➤ **To download JDK 5.0**

1. Browse to the URL:

<http://java.sun.com/j2se/1.5.0/download.jsp>

2. Click the link for **JDK 5.0 Update 11** (or later).

A page with the following heading appears:

J2SE(TM) Development Kit 5.0 Update 11 (or later).

3. Scroll down. Accept the license agreement.
4. Click the link:

Windows Offline Installation, Multi-language

This is the download file with size ~50 MB. You will be prompted to specify a location for the downloaded file.

Installing JDK

➤ **To install JDK**

1. Navigate to the location where you downloaded the JDK file.
2. Double click on the filename

The installation proceeds automatically.

HSQL database

If you want to use HSQL, Alfresco is already pre-configured to use this database. No further action is needed, so you can continue to "Downloading and installing Alfresco".

If you want to use MySQL, refer to "Optional installation of MySQL".

For other databases, refer to the forums and wiki at www.alfresco.com

Optional installation of MySQL

Ignore this section if you want to use HSQL.

Downloading MySQL

➤ To download MySQL

1. Browse to the URL:

<http://dev.mysql.com/downloads/mysql/5.0.html>

This page has the heading:

MySQL 5.0 Downloads

2. Scroll down to the section, **Windows downloads**, and click the **Download** link corresponding to **Windows (x86)**

This is the download file with size ~40 MB.

3. When you are prompted, specify a download destination.

Installing MySQL

Installation and configuration is done by an installation wizard, followed immediately by a configuration wizard.

➤ To install MySQL

1. Navigate to the location where you downloaded the MySQL file.

2. Unzip the file.

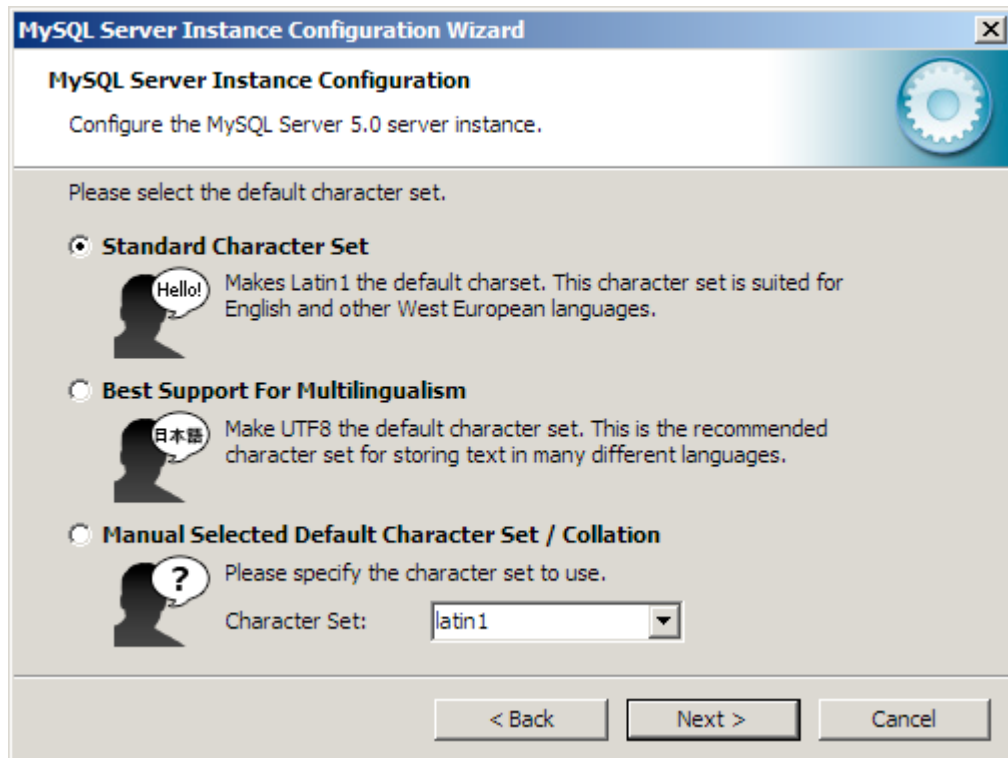
The zip file contains only a `setup.exe` file.

3. Double click on the `setup.exe` file.

The **Setup Wizard** appears (figure).



4. In the **Welcome** screen, click **Next**.
5. In the **Setup Type** screen, click **Next**.
6. In the **Ready to Install** screen, click **Install**.
7. In the **MySQL.com Sign-Up** screen, select the **Skip Sign-Up** radio button. Click **Next**.
8. In the **Wizard Completed** screen, click **Finish**.
The **Configuration Wizard** appears.
9. In the **Configuration Wizard**, click **Next** in every dialog until you arrive at the following dialog:



10. Select **Best Support for Multilingualism**.

This causes UTF8 to be the default character set.

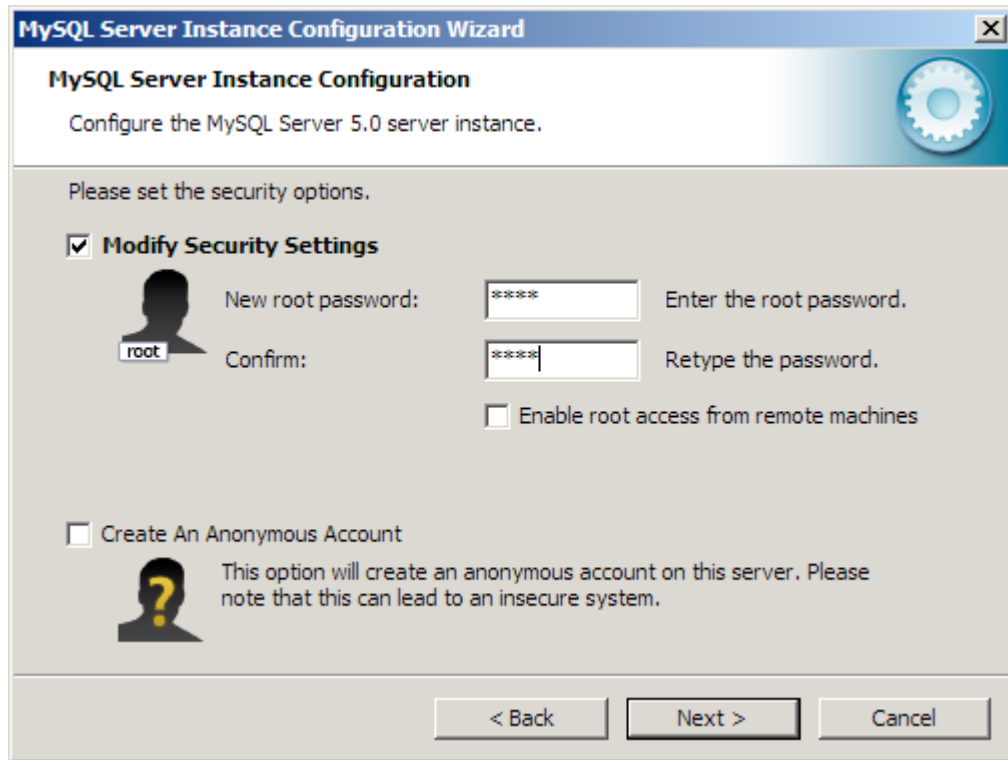
11. Click **Next**.

12. The Windows options dialog appears.



13. Accept **Install as Windows Service**.
14. Check **Include Bin Directory in Windows PATH**.
15. Click **Next**.

The security window appears (figure).



16. Enter a value for the root password, and confirm the same value.

Note: Remember the password!

17. Click **Next**.
18. In the **Ready to execute ...** dialog, click **Execute**.
19. In the final dialog, click **Finish**.

Testing MySQL

It is very easy to test if MySQL is running correctly.

➤ To test MySQL

1. Open a DOS command window.
2. Type `mysql -u root -p`

The system responds with `Enter password:`

Type the password that you specified above. Press ENTER.

If no errors are reported, then MySQL is installed and running.

3. To exit from MySQL, type `exit` at the `mysql>` prompt.

Downloading and installing Alfresco

Downloading Alfresco

➤ To download Alfresco

1. First, create a directory named `c:\Alfresco`
You will be downloading to this directory.
2. Enterprise customers should browse to the customer's or partner's portal.
This launches the Alfresco web client.
3. If you are in the **Guest Home** space, log out.
4. At the login screen, enter your user name and password.
This launches the Alfresco web client, in your home space.
5. Click **Company Home > Downloads > 2.0 Releases > 2.0.x**
6. Select the Tomcat file for Windows:
alfresco-enterprise-tomcat-2.0.x.zip
You are asked to specify a location for the download.
7. Specify the `c:\Alfresco` directory that you created earlier.

Installing Alfresco

➤ To install Alfresco

1. Browse to the `c:\Alfresco` folder.
2. Unzip the file that you downloaded earlier.

Optionally creating the MySQL database

Ignore this section if you want to use HSQL.

➤ To create the MySQL database

1. Open a DOS command window (refer to "Opening a DOS window", on page 9).
2. Type `cd c:\alfresco\extras\databases\mysql`
3. Press ENTER.
4. Type `db_setup`

5. Press ENTER.

If the setup is correct, a MySQL database will be created, having the following properties:

- Database name: `alfresco`
- Database user name: `alfresco`
- Database password: `alfresco`

➤ **To check that the database has been created**

1. Using Windows Explorer, navigate to:

C:\Program Files\MySQL\MySQL Server 5.0\data

2. In the right pane of Windows Explorer, verify that there is a folder named **Alfresco**.

Possible problems

After typing `db_setup` (above), you might get the message:

```
'mysql' is not recognized as an internal or external command ...
```

This means that you must add `mysql` command to the windows `path` variable (refer to "Adding folder paths to the Windows Path variable", on page 11). After modifying the **Path** variable, you can retry your attempt to create a MySQL database (above).

Configuring the database connection and data locations

Ignore this section if you want to use HSQL.

Before starting Alfresco for the first time, you are recommended to configure the database connection and the location of data folders. Refer to the following sections in the *System Administration Guide*:

- "Customizing `dir.root`"
- "Customizing database properties"

If you want to use MySQL, you must delete or modify three files that are set to use HSQL. These files, in the `tomcat\shared\classes\alfresco\extension` directory are:

- `custom-db-and-data-context.xml`
- `custom-db-connection.properties`
- `custom-hibernate-dialect.properties`

Starting and stopping Alfresco

➤ **To start Alfresco**

1. Browse to **C:\alfresco**

2. Double-click **alf_start.bat**

A DOS window is opened. The following message eventually appears:

```
INFO: Server startup in nnnnn ms
```

When you see this message, the server has started.

➤ **To stop Alfresco**

1. Browse to **C:\alfresco**
2. Double-click **alf_stop.bat**

When the DOS window that was opened during startup is closed, Alfresco has stopped.

Using the CIFS server

Mapping an Alfresco space to a network drive is done by individual users. Refer to "Mapping an Alfresco space to a network drive" in the *Getting Started Guide*.

If the user is unable to map a network drive after following the instructions in the *Getting Started Guide*, try the following procedure.

➤ **To check whether the CIFS server is running**

- From a command prompt, enter the command `nbtstat -n`

One of the listed names should be the CIFS server name.

If you are unable to connect to the CIFS server, then depending on your network, you might need to configure the domain for CIFS to use.

➤ **To configure the domain for CIFS**

1. Ensure that the Alfresco server has been started at least once.
2. Open the file:
`c:\alfresco\tomcat\shared\classes\alfresco\extension\file-servers.xml`
3. Add the domain to the end of the line:

```
<host name="${localname}_A"/>
```

For example:

```
<host name="${localname}_A" domain="MYDOMAIN"/>
```

4. Restart the Alfresco server for the change to take effect.

Enabling image manipulation

Enabling image manipulation simply means adding the appropriate path to the Windows PATH variable, to allow Windows to find the `imconvert.exe` file.

➤ **To enable image manipulation**

- Add the following path to the Windows PATH variable (refer to "Adding folder paths to the Windows Path variable" on page 11):

`C:\alfresco\bin`

Installing OpenOffice

Within Alfresco, users can transform a document from one format to another. For example, they can transform a text file to a PDF file.

If you want Alfresco users to have access to transformation facilities, you must install OpenOffice. This is optional, and can be done any time after Alfresco is installed.

Downloading OpenOffice

➤ **To download OpenOffice**

1. Browse to <http://download.openoffice.org>
2. Click on the link **OpenOffice.org 2.1 (stable)**, or any later version.
3. In the **Get OpenOffice.org!** page, click on **Windows** operating system.
4. When you are prompted, specify a download destination.

Installing OpenOffice

➤ **To install OpenOffice**

1. Using Windows Explorer, navigate to the location where you downloaded the OpenOffice file.
2. Double-click the file name.
3. In the installation dialog, click **Next**.
4. In the **Select Folder** dialog, specify a temporary location for OpenOffice to use during installation.
5. Click **Unpack**.
6. In the **Installation Wizard**, click **Next**.
7. Accept the license agreement. Click **Next**.
8. In the Customer Information dialog, accept or change the information. Click **Next**.
9. In the Setup Type dialog, accept **Complete**. Click **Next**.
10. In the File Type dialog, leave all check boxes unchecked.

You can change them later if you want.

11. Click **Next**.
12. Click **Install**.
13. When installation has completed, click **Finish**.

You can delete the temporary files mentioned in step 4. The OpenOffice application files are in:

C:\Program Files\OpenOffice.org 2.1

There will be an entry in **Start > Programs**

Installing WCM

If you plan to use WCM (Web Content Management), refer to "Installing WCM", on page 53.

2 JBoss on Windows XP

The procedures in this chapter show you how to install Alfresco bundled with JBoss.

Note: This software is for evaluation purposes only and cannot be used against an existing Alfresco repository. There will not be an upgrade path from this candidate release to the final 2.0 release.

Installing JDK

If you have already downloaded any of the software discussed in this section, ignore the instructions and continue to the next step.

Downloading JDK

➤ **To download JDK 5.0**

1. Browse to the URL:

`http://java.sun.com/j2se/1.5.0/download.jsp`

2. Click the link for **JDK 5.0 Update 11** (or later).

A page with the following heading appears:

J2SE(TM) Development Kit 5.0 Update 11 (or later).

3. Scroll down. Accept the license agreement.
4. Click the link:

Windows Offline Installation, Multi-language

This is the download file with size ~50 MB. You will be prompted to specify a location for the downloaded file.

Installing JDK

➤ **To install JDK**

1. Navigate to the location where you downloaded the JDK file.
2. Double click on the filename.

The installation proceeds automatically.

HSQL database

If you want to use HSQL, Alfresco is already pre-configured to use this database. No further action is needed, so you can continue to "Downloading and installing Alfresco".

If you want to use MySQL, refer to "Optional installation of MySQL", below.

For other databases, refer to the forums and wiki at www.alfresco.com

Optional installation of MySQL

Ignore this section if you want to use HSQL.

Downloading MySQL

➤ To download MySQL

1. Browse to the URL:

<http://dev.mysql.com/downloads/mysql/5.0.html>

This page has the heading:

MySQL 5.0 Downloads

2. Scroll down to the section, **Windows downloads**, and click the **Download** link corresponding to **Windows (x86)**

This is the download file with size ~40 MB.

3. When you are prompted, specify a download destination.

Installing MySQL

Installation and configuration is done by an installation wizard, followed immediately by a configuration wizard.

➤ To install MySQL

1. Navigate to the location where you downloaded the MySQL file.

2. Unzip the file.

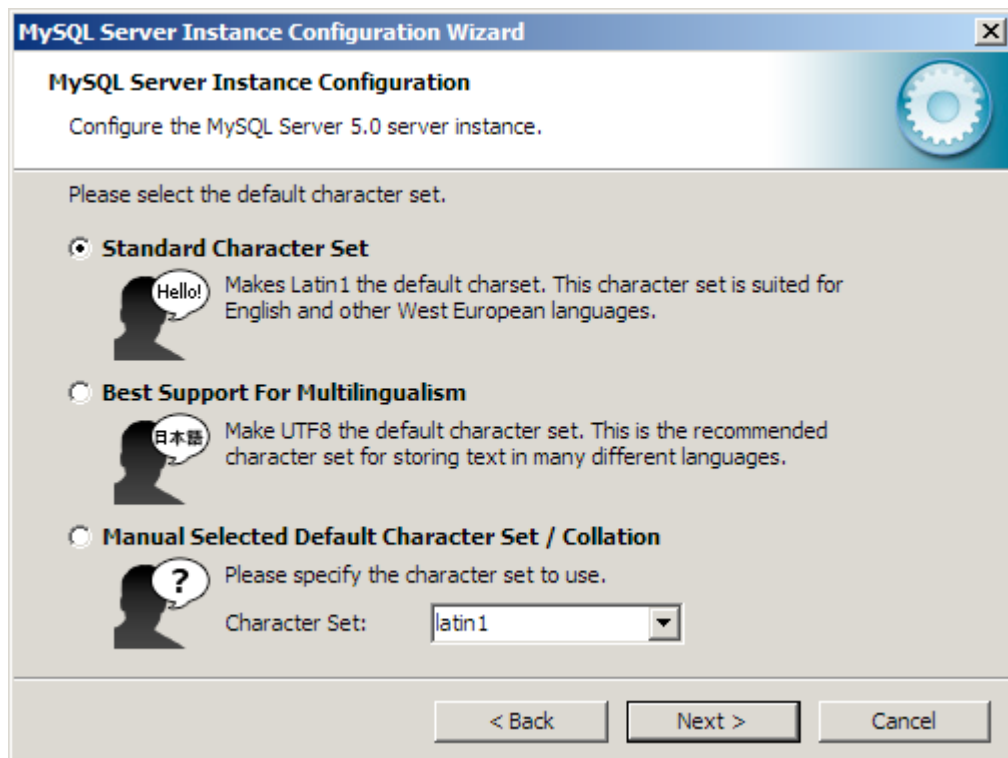
The zip file contains only a `setup.exe` file.

3. Double click on the `setup.exe` file.

The **Setup Wizard** appears (figure).



4. In the **Welcome** screen, click **Next**.
5. In the **Setup Type** screen, click **Next**.
6. In the **Ready to Install** screen, click **Install**.
7. In the **MySQL.com Sign-Up** screen, select the **Skip Sign-Up** radio button. Click **Next**.
8. In the **Wizard Completed** screen, click **Finish**.
The **Configuration Wizard** appears.
9. In the **Configuration Wizard**, click **Next** in every dialog until you arrive at the following dialog:



10. Select **Best Support for Multilingualism**.

This causes UTF8 to be the default character set.

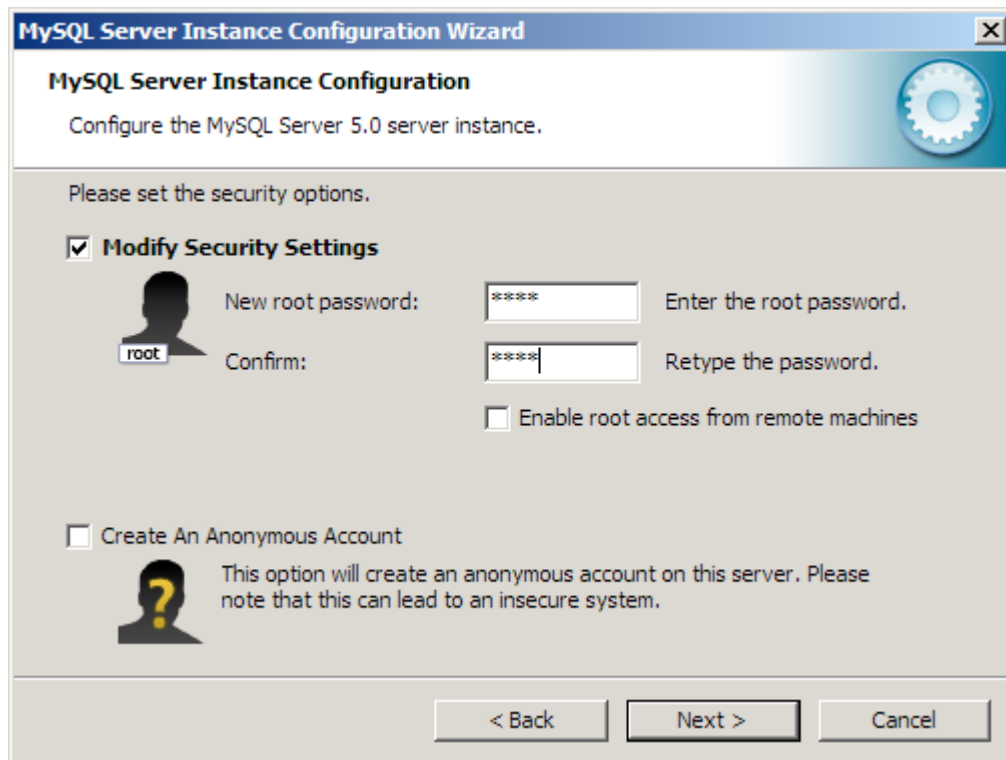
11. Click **Next**.

12. The Windows options dialog appears.



13. Accept **Install as Windows Service**.
14. Check **Include Bin Directory in Windows PATH**.
15. Click **Next**.

The security window appears (figure).



16. Enter a value for the root password, and confirm the same value.

Note: Remember the password!

17. Click **Next**.
18. In the **Ready to execute ...** dialog, click **Execute**.
19. In the final dialog, click **Finish**.

Testing MySQL

It is very easy to test if MySQL is running correctly.

➤ To test MySQL

1. Open a DOS command window.
2. Type `mysql -u root -p`
3. The system responds with `Enter password:`
Type the password that you specified above. Press ENTER.

If no errors are reported, then MySQL is installed and running.

4. To exit from MySQL, type `exit` at the `mysql>` prompt.

Downloading and installing Alfresco

Downloading Alfresco

➤ To download Alfresco

1. First, create a directory named `c:\Alfresco`
You will be downloading to this directory.
2. Enterprise customers should browse to the customer's or partner's portal.
This launches the Alfresco web client.
3. If you are in the **Guest Home** space, log out.
4. At the login screen, enter your user name and password.
This launches the Alfresco web client, in your home space.
5. Click **Company Home > Downloads > 2.0 Releases > 2.0.x**
6. Select the JBoss file for Windows:
alfresco-enterprise-jboss-2.0.x.zip
You are asked to specify a location for the download.
7. Specify the `c:\Alfresco` directory that you created earlier.

Installing Alfresco

➤ To install Alfresco

- Unzip the file that you downloaded earlier.

Optionally creating the MySQL database

Ignore this section if you want to use HSQL.

➤ To create the MySQL database

1. Open a DOS command window (refer to "Opening a DOS window", on page 9).
2. Type `cd c:\alfresco\extras\databases\mysql`
3. Press ENTER.
4. Type `db_setup`
5. Press ENTER.

If the setup is correct, a MySQL database will be created, having the following properties:

- Database name: alfresco
- Database user name: alfresco
- Database password: alfresco

➤ **To check that the database has been created**

1. Using Windows Explorer, navigate to:
C:\Program Files\MySQL\MySQL Server 5.0\data
2. In the right pane of Windows Explorer, verify that there is a folder named **Alfresco**.

Possible problems

After typing `db_setup` (above), you might get the message:

```
'mysql' is not recognized as an internal or external command ...
```

This means that you must add `mysql` command to the windows `path` variable (refer to "Adding folder paths to the Windows Path variable", on page 11). After modifying the **Path** variable, you can retry your attempt to create a MySQL database (above).

Configuring the database connection and data locations

Ignore this section if you want to use HSQL.

Before starting Alfresco for the first time, you are recommended to configure the database connection and the location of data folders. Refer to the following sections in the *System Administration Guide*:

- "Customizing `dir.root`"
- "Customizing database properties"

If you want to use MySQL, you must delete or modify three files that are set to use HSQL. These files, in the `jboss\server\default\conf\alfresco\extension\` directory are:

- `custom-db-and-data-context.xml`
- `custom-db-connection.properties`
- `custom-hibernate-dialect.properties`

Starting and stopping Alfresco

➤ **To start Alfresco**

1. Browse to `c:\alfresco`

2. Double-click `alf_start.bat`

A DOS window is opened. The following message eventually appears:

```
INFO: Server startup in nnnnn ms
```

When you see this message, the server has started.

➤ **To stop Alfresco**

1. Browse to `c:\alfresco`
2. Double-click `alf_stop.bat`

When the DOS window that was opened during startup is closed, Alfresco has stopped.

Using the CIFS server

Mapping an Alfresco space to a network drive is done by individual users. Refer to "Mapping an Alfresco space to a network drive" in the *Getting Started Guide*.

If the user is unable to map a network drive after following the instructions in the *Getting Started Guide*, try the following procedure.

➤ **To check whether the CIFS server is running**

- From a command prompt, enter the command `nbtstat -n`

One of the listed names should be the CIFS server name.

If you are unable to connect to the CIFS server, then depending on your network, you might need to configure the domain for CIFS to use.

➤ **To configure the domain for CIFS**

1. Ensure that the Alfresco server has been started at least once.
2. Open the file:

```
c:\alfresco\jboss\server\default\conf\alfresco\extension\file-servers.xml
```

3. Add the domain to the end of the line:

```
<host name="${localname}_A"/>
```

For example:

```
<host name="${localname}_A" domain="MYDOMAIN"/>
```

4. Restart the Alfresco server for the change to take effect.

Enabling image manipulation

Enabling image manipulation simply means adding the appropriate path to the Windows PATH variable, to allow Windows to find the `imconvert.exe` file.

➤ **To enable image manipulation**

- Add the following path to the Windows PATH variable (refer to "Adding folder paths to the Windows Path variable" on page 11):

`C:\alfresco\bin`

Installing OpenOffice

Within Alfresco, users can transform a document from one format to another. For example, they can transform a text file to a PDF file.

If you want Alfresco users to have access to transformation facilities, you must install OpenOffice. This is optional, and can be done any time after Alfresco is installed.

Downloading OpenOffice

➤ **To download OpenOffice**

1. Browse to <http://download.openoffice.org>
2. Click on the link **OpenOffice.org 2.1 (stable)**, or any later version.
3. In the **Get OpenOffice.org!** page, click on **Windows** operating system.
4. When you are prompted, specify a download destination.

Installing OpenOffice

➤ **To install OpenOffice**

1. Using Windows Explorer, navigate to the location where you downloaded the OpenOffice file.
2. Double-click the file name.
3. In the installation dialog, click **Next**.
4. In the **Select Folder** dialog, specify a temporary location for OpenOffice to use during installation.
5. Click **Unpack**.
6. In the **Installation Wizard**, click **Next**.
7. Accept the license agreement. Click **Next**.
8. In the Customer Information dialog, accept or change the information. Click **Next**.
9. In the Setup Type dialog, accept **Complete**. Click **Next**.
10. In the File Type dialog, leave all check boxes unchecked.

You can change them later if you want.

11. Click **Next**.
12. Click **Install**.
13. When installation has completed, click **Finish**.

You can delete the temporary files mentioned in step 4. The OpenOffice application files are in:

C:\Program Files\OpenOffice.org 2.1

There will be an entry in **Start > Programs**

Installing WCM

If you plan to use WCM (Web Content Management), refer to "Installing WCM", on page 53.

3 Tomcat on Linux

The procedures in this chapter show you how to install Alfresco bundled with Tomcat.

Prerequisites

The following instructions assume that you are familiar with Linux commands. If you do not have administrative privileges, you might need to prefix some of the commands with `sudo`

Installing JDK

If you have already downloaded any of the software discussed in this section, ignore the instructions and continue to the next step.

Downloading JDK

➤ **To download JDK 5.0**

1. Browse to the URL:
`http://java.sun.com/j2se/1.5.0/download.jsp`
2. Click the link for **JDK 5.0 Update 11** (or later).
A page with the following heading appears:
J2SE(TM) Development Kit 5.0 Update 11 (or later).
3. Scroll down. Accept the license agreement.
4. Scroll down to your preferred Linux Platform option and click the link.
You will be prompted to specify a location for the downloaded file.

Installing JDK

➤ **To install JDK**

1. Navigate to the location where you downloaded the JDK file.
2. Install the JDK.
3. Ensure that the `JAVA_HOME` environment variable is set correctly.

HSQL database

If you want to use HSQL, Alfresco is already pre-configured to use this database. No further action is needed, so you can continue to "Downloading and installing Alfresco".

If you want to use MySQL, refer to "Optional installation of MySQL", below.

For other databases, refer to the forums and wiki at www.alfresco.com

Optional installation of MySQL

Ignore this section if you want to use HSQL.

Downloading MySQL

➤ To download MySQL

1. Browse to the URL:

<http://dev.mysql.com/downloads/mysql/5.0.html>

This page has the heading:

MySQL 5.0 Downloads

2. There are several Linux downloads available. Select the appropriate MySQL Max for your platform.
3. When you are prompted, specify a download destination.

Installing MySQL

Installation and configuration is done by an installation wizard, followed immediately by a configuration wizard.

➤ To install MySQL

1. Navigate to the location where you downloaded the MySQL file.
2. Install MySQL, using the **Typical** setup type.
3. You can skip the MySQL.com sign-up.
4. Configure MySQL using options that are appropriate for the required use.
 - For demo purposes, choose the default selected options.
 - For non-English or non-West European languages, choose UTF8 Character set.

Testing MySQL

It is very easy to test if MySQL is running correctly.

➤ **To test MySQL**

1. Open an operating system console.
2. Type `mysql -u root -p`
The system responds with `Enter password:`
3. Type the password that you specified above. Press ENTER.
If no errors are reported, then MySQL is installed and running.
4. To exit from MySQL, type `exit` at the `mysql>` prompt.

Downloading and installing Alfresco

Downloading Alfresco

➤ **To download Alfresco**

1. First, create a directory named `/opt/alfresco`
You will be downloading to this directory.
2. Enterprise customers should browse to the customer's or partner's portal.
This launches the Alfresco web client.
3. If you are in the **Guest Home** space, log out.
4. At the login screen, enter your user name and password.
This launches the Alfresco web client, in your home space.
5. **Click Company Home > Downloads > 2.0 Releases > 2.0.x**
6. Select the Tomcat file for Linux:
`alfresco-enterprise-tomcat-2.0.x.tar.gz`
You are asked to specify a location for the download.
7. Specify the `/opt/alfresco` directory that you created earlier.

Installing Alfresco

➤ **To install Alfresco**

1. Browse to the `/opt/alfresco` directory.
2. `tar` uncompress the file that you downloaded earlier.

Setting paths

➤ To set paths

1. Edit `alfresco.sh`
2. Ensure that the variables are pointing to the location where Tomcat is installed.

For the Tomcat bundle, this will be:

```
/opt/alfresco/tomcat
```

Optionally creating the MySQL database

Ignore this section if you want to use HSQL.

➤ To create the MySQL database

1. Navigate to `alfresco/extras/databases/mysql`
2. Run `mysql -u root -p <db_setup.sql`

If the setup is correct, a MySQL database will be created, having the following properties:

- Database name: `alfresco`
- Database user name: `alfresco`
- Database password: `alfresco`

Configuring the database connection and data locations

Ignore this section if you want to use HSQL.

Before starting Alfresco for the first time, you are recommended to configure the database connection and the location of data folders. Refer to the following sections in the *System Administration Guide*:

- "Customizing `dir.root`"
- "Customizing database properties"

If you want to use MySQL, you must delete or modify three files that are set to use HSQL. These files, in the `tomcat/shared/classes/alfresco/extension` directory are:

- `custom-db-and-data-context.xml`
- `custom-db-connection.properties`
- `custom-hibernate-dialect.properties`

Starting and stopping Alfresco

➤ To start Alfresco

If you have chosen the MySQL database, then ensure that MySQL server is running.

1. Browse to the `/opt/alfresco` directory.
2. Run `alfresco.sh start`

➤ To try Alfresco

You can now try Alfresco by visiting:

`http://localhost:8080/alfresco`

The server is configured with a single administrative login with user name and password both set to `admin`.

➤ To stop Alfresco

1. Browse to the `/opt/alfresco` directory.
2. Run `alfresco.sh stop`

Using the CIFS server

Mapping an Alfresco space to a network drive is done by individual users. Refer to "Mapping an Alfresco space to a network drive" in the *Getting Started Guide*.

If the user is unable to map a network drive after following the instructions in the *Getting Started Guide*, try the following procedure.

➤ To check whether the CIFS server is running

- From a command prompt, enter the command `nbtstat -n`
One of the listed names should be the CIFS server name.

If you are unable to connect to the CIFS server, then depending on your network, you might need to configure the domain for CIFS to use.

➤ To configure the domain for CIFS

1. Ensure that the Alfresco server has been started at least once.
2. Open the file:
`~/alfresco/tomcat/shared/classes/alfresco/extension/file-servers.xml`
3. Add the domain to the end of the line:
`<host name="${localname}_A"/>`

For example:

```
<host name="${localname}_A" domain="MYDOMAIN"/>
```

4. Restart the Alfresco server for the change to take effect.

Enabling image manipulation

To enable image manipulation, the ImageMagick package needs to be installed. On many Linux distributions, it is already available. To check, try running the `convert` command, which is part of ImageMagick and usually found in `/usr/bin`

Installing OpenOffice

Within Alfresco, users can transform a document from one format to another. For example, they can transform a text file to a PDF file.

If you want Alfresco users to have access to transformation facilities, you must install OpenOffice. This is optional, and can be done any time after Alfresco is installed.

Downloading OpenOffice

➤ **To download OpenOffice**

1. Browse to <http://download.openoffice.org>
2. Download the Linux version.

Installing Open Office

1. Install OpenOffice.
2. Start one of the OpenOffice programs to do the initial registration.
3. Close OpenOffice.
4. Rename `/opt/alfresco/zstart_oo.sh` to `/opt/alfresco/start_oo.sh`
5. Edit `/opt/alfresco/start_oo.sh` and set the correct location for OpenOffice.
6. If the Alfresco server is running, stop and restart the server (refer to "Starting and stopping Alfresco", on page 25).

Installing WCM

If you plan to use WCM (Web Content Management), refer to "Installing WCM", on page 53.

4 JBoss on Linux

The procedures in this chapter show you how to install Alfresco bundled with JBoss.

Note: This software is for evaluation purposes only and cannot be used against an existing Alfresco repository. There will not be an upgrade path from this candidate release to the final 2.0 release.

Prerequisites

The following instructions assume that you are familiar with Linux commands. If you do not have administrative privileges, you might need to prefix some of the commands with `sudo`

Installing JDK

If you have already downloaded any of the software discussed in this section, ignore the instructions and continue to the next step.

Downloading JDK

➤ **To download JDK 5.0**

1. Browse to the URL:

<http://java.sun.com/j2se/1.5.0/download.jsp>

2. Click the link for **JDK 5.0 Update 11** (or later).

A page with the following heading appears:

J2SE(TM) Development Kit 5.0 Update 11 (or later).

3. Scroll down. Accept the license agreement.
4. Scroll down to your preferred Linux Platform option and click the link.

You will be prompted to specify a location for the downloaded file.

Installing JDK

➤ **To install JDK**

1. Navigate to the location where you downloaded the JDK file.

2. Install the JDK.
3. Ensure that the `JAVA_HOME` environment variable is set correctly.

HSQL database

If you want to use HSQL, Alfresco is already pre-configured to use this database. No further action is needed, so you can continue to "Downloading and installing Alfresco".

If you want to use MySQL, refer to "Optional installation of MySQL", below.

For other databases, refer to the forums and wiki at www.alfresco.com

Optional installation of MySQL

Ignore this section if you want to use HSQL.

Downloading MySQL

➤ To download MySQL

1. Browse to the URL:

<http://dev.mysql.com/downloads/mysql/5.0.html>

This page has the heading:

MySQL 5.0 Downloads

2. There are several Linux downloads available. Select the appropriate MySQL Max for your platform.
3. When you are prompted, specify a download destination.

Installing MySQL

Installation and configuration is done by an installation wizard, followed immediately by a configuration wizard.

➤ To install MySQL

1. Navigate to the location where you downloaded the MySQL file.
2. Install MySQL, using the **Typical** setup type.
3. You can skip the MySQL.com sign-up.
4. Configure MySQL using options that are appropriate for the required use.
 - For demo purposes, choose the default selected options.
 - For non-English or non-West European languages, choose UTF8 Character set.

Testing MySQL

It is very easy to test if MySQL is running correctly.

➤ To test MySQL

1. Open an operating system console.
2. Type `mysql -u root -p`
The system responds with `Enter password:`
3. Type the password that you specified above. Press ENTER.
If no errors are reported, then MySQL is installed and running.
4. To exit from MySQL, type `exit` at the `mysql>` prompt.

Downloading and installing Alfresco

Downloading Alfresco

➤ To download Alfresco

1. First, create a directory named `/opt/alfresco`
You will be downloading to this directory.
2. Enterprise customers should browse to the customer's or partner's portal.
This launches the Alfresco web client.
3. If you are in the **Guest Home** space, log out.
4. At the login screen, enter your user name and password.
This launches the Alfresco web client, in your home space.
5. Click **Company Home > Downloads > 2.0 Releases > 2.0.x**
6. Select the JBoss file for Linux:
alfresco-enterprise-jboss-2.0.x.tar.gz
You are asked to specify a location for the download.
7. Specify the `/opt/alfresco` directory that you created earlier.

Installing Alfresco

➤ To install Alfresco

1. Browse to the `/opt/alfresco` directory.
2. `tar` uncompress the file that you downloaded earlier.

Setting paths

➤ To set paths

1. Edit `alfresco.sh`
2. Ensure that the variables are pointing to the location where JBoss is installed.

For the JBoss bundle, this will be:

```
/opt/alfresco/jboss
```

Optionally creating the MySQL database

Ignore this section if you want to use HSQL.

➤ To create the MySQL database

1. Navigate to `alfresco/extras/databases/mysql`
2. Run `db_setup.bat` <<see Paul on this>>

If the setup is correct, a MySQL database will be created, having the following properties:

- Database name: `alfresco`
- Database user name: `alfresco`
- Database password: `alfresco`

Configuring the database connection and data locations

Ignore this section if you want to use HSQL.

Before starting Alfresco for the first time, you are recommended to configure the database connection and the location of data folders. Refer to the following sections in the *System Administration Guide*:

- "Customizing `dir.root`"
- "Customizing database properties"

If you want to use MySQL, you must delete or modify three files that are set to use HSQL. These files, in the `jboss/server/default/conf/alfresco/extension/` directory are:

- `custom-db-and-data-context.xml`
- `custom-db-connection.properties`
- `custom-hibernate-dialect.properties`

Starting and stopping Alfresco

➤ To start Alfresco

1. If you have chosen the MySQL database, ensure that the MySQL server is running.
2. Browse to the `/opt/alfresco` directory.
3. Run `alfresco.sh start`

➤ To try Alfresco

1. Browse to:
`http://localhost:8080/portal`
2. From the Page Menu, navigate to **Alfresco**
3. Maximize the portlet (icon at top right).

The server is configured with a single administrative login with user name and password both set to `admin`.

➤ To stop Alfresco

1. Browse to the `/opt/alfresco` directory.
2. Run `alfresco.sh stop`

Using the CIFS server

Mapping an Alfresco space to a network drive is done by individual users. Refer to "Mapping an Alfresco space to a network drive" in the *Getting Started Guide*.

If the user is unable to map a network drive after following the instructions in the *Getting Started Guide*, try the following procedure.

➤ To check whether the CIFS server is running

- From a command prompt, enter the command `nbtstat -n`
One of the listed names should be the CIFS server name.

If you are unable to connect to the CIFS server, then depending on your network, you might need to configure the domain for CIFS to use.

➤ To configure the domain for CIFS

1. Ensure that the Alfresco server has been started at least once.
2. Open the file:

```
<alfresco>/jboss/server/default/conf/alfresco/extension/file-servers.xml
```

3. Add the domain to the end of the line:

```
<host name="${localname}_A"/>
```

For example:

```
<host name="${localname}_A" domain="MYDOMAIN"/>
```

4. Restart the Alfresco server for the change to take effect.

Enabling image manipulation

To enable image manipulation, the ImageMagick package needs to be installed. On many Linux distributions, it is already available. To check, try running the `convert` command, which is part of ImageMagick and usually found in `/usr/bin`

Installing OpenOffice

Within Alfresco, users can transform a document from one format to another. For example, they can transform a text file to a PDF file.

If you want Alfresco users to have access to transformation facilities, you must install OpenOffice. This is optional, and can be done any time after Alfresco is installed.

Downloading OpenOffice

➤ To download OpenOffice

1. Browse to <http://download.openoffice.org>
2. Download the Linux version.

Installing Open Office

1. Install OpenOffice.
2. Start one of the OpenOffice programs to do the initial registration.
3. Close OpenOffice.
4. Rename `/opt/alfresco/zstart_oo.sh` to `/opt/alfresco/start_oo.sh`
5. Edit `/opt/alfresco/start_oo.sh` and set the correct location for OpenOffice.
6. If the Alfresco server is running, stop and restart the server. For information on stopping and starting Alfresco, refer to "Starting and stopping Alfresco", on page 31.

Installing WCM

If you plan to use WCM (Web Content Management), refer to "Installing WCM", on page 53.

5 Tomcat on Mac OS X

The procedures in this chapter show you how to install Alfresco bundled with Tomcat.

Prerequisites

The following instructions assume that you are familiar with OS X commands. If you do not have administrative privileges, you might need to prefix some of the commands with `sudo`

You must have Mac OS X 10.4 or above.

Installing JDK

If you have already downloaded any of the software discussed in this section, ignore the instructions and continue to the next step.

Downloading JDK

➤ **To download JDK 5.0**

1. Browse to the URL:

<http://www.apple.com/support/downloads>

2. Scroll down to the Java downloads.

You will be prompted to specify a location for the downloaded file.

Installing JDK

➤ **To install JDK**

1. Navigate to the location where you downloaded the JDK file.
2. Install the JDK.
3. Ensure that the `JAVA_HOME` variable is set correctly.

HSQL database

If you want to use HSQL, Alfresco is already pre-configured to use this database. No further action is needed, so you can continue to "Downloading and installing Alfresco".

If you want to use MySQL, refer to "Optional installation of MySQL", below.

For other databases, refer to the forums and wiki at www.alfresco.com

Optional installation of MySQL

Ignore this section if you want to use HSQL.

Downloading MySQL

➤ To download MySQL

1. Browse to the URL:

<http://dev.mysql.com/downloads/mysql/5.0.html>

This page has the heading:

MySQL 5.0 Downloads

2. There are several Mac OS X downloads available. Select the appropriate MySQL Max for your platform.
3. When you are prompted, specify a download destination.

Installing MySQL

Installation and configuration is done by an installation wizard, followed immediately by a configuration wizard.

➤ To install MySQL

1. Navigate to the location where you downloaded the MySQL file.
2. Install MySQL, using the **Typical** setup type.
3. You can skip the MySQL.com sign-up.
4. Configure MySQL using options that are appropriate for the required use.
 - For demo purposes, choose the default selected options.
 - For non-English or non-West European languages, choose UTF8 Character set.

Testing MySQL

It is very easy to test if MySQL is running correctly.

➤ **To test MySQL**

1. Open an operating system console.
2. Type `mysql -u root -p`
The system responds with `Enter password:`
3. Type the password that you specified above. Press ENTER.
If no errors are reported, then MySQL is installed and running.
4. To exit from MySQL, type `exit` at the `mysql>` prompt.

Downloading and installing Alfresco

Downloading Alfresco

➤ **To download Alfresco**

1. First, create a directory named `/opt/alfresco`
You will be downloading to this directory.
2. Enterprise customers should browse to the customer's or partner's portal.
This launches the Alfresco web client.
3. If you are in the **Guest Home** space, log out.
4. At the login screen, enter your user name and password.
This launches the Alfresco web client, in your home space.
5. Click **Company Home > Downloads > 2.0 Releases > 2.0.x**
6. Select the Tomcat file for Linux:
alfresco-enterprise-tomcat-2.0.x.tar.gz
You are asked to specify a location for the download.
7. Specify the `/opt/alfresco` directory that you created earlier.

Installing Alfresco

➤ **To install Alfresco**

1. Browse to the `/opt/alfresco` directory.
2. `tar` uncompress the file that you have just downloaded.

Setting paths

➤ To set paths

1. Edit `alfresco.sh`
2. Ensure that the variables are pointing to the location where Tomcat is installed.

For the Tomcat bundle, this will be:

```
/opt/alfresco/tomcat
```

Optionally creating the MySQL database

Ignore this section if you want to use HSQL.

➤ To create the MySQL database

1. Navigate to `alfresco/extras/databases/mysql`
2. Run `db_setup.bat`

If the setup is correct, a MySQL database will be created, having the following properties:

- Database name: `alfresco`
- Database user name: `alfresco`
- Database password: `alfresco`

Configuring the database connection and data locations

Ignore this section if you want to use HSQL.

Before starting Alfresco for the first time, you are recommended to configure the database connection and the location of data folders. Refer to the following sections in the *System Administration Guide*:

- "Customizing `dir.root`"
- "Customizing database properties"

If you want to use MySQL, you must delete or modify three files that are set to use HSQL. These files, in the `tomcat/shared/classes/alfresco/extension` directory are:

- `custom-db-and-data-context.xml`
- `custom-db-connection.properties`
- `custom-hibernate-dialect.properties`

Starting and stopping Alfresco

➤ To start Alfresco

If you have chosen the MySQL database, then ensure that MySQL server is running.

1. Browse to the `/opt/alfresco` directory.
2. Run `alfresco.sh start`

➤ To try Alfresco

You can now try Alfresco by visiting:

`http://localhost:8080/alfresco`

The server is configured with a single administrative login with user name and password both set to `admin`.

➤ To stop Alfresco

1. Browse to the `/opt/alfresco` directory.
2. Run `alfresco.sh stop`

Using the CIFS server

Mapping an Alfresco space to a network drive is done by individual users. Refer to "Mapping an Alfresco space to a network drive" in the *Getting Started Guide*.

If the user is unable to map a network drive after following the instructions in the *Getting Started Guide*, try the following procedure.

➤ To check whether the CIFS server is running

- From a command prompt, enter the command `nbtstat -n`
One of the listed names should be the CIFS server name.

If you are unable to connect to the CIFS server, then depending on your network, you might need to configure the domain for CIFS to use.

➤ To configure the domain for CIFS

1. Ensure that the Alfresco server has been started at least once.
2. Open the file:
`~/alfresco/tomcat/shared/classes/alfresco/extension/file-servers.xml`
3. Add the domain to the end of the line:
`<host name="${localname}_A"/>`

For example:

```
<host name="${localname}_A" domain="MYDOMAIN"/>
```

4. Restart the Alfresco server for the change to take effect.

Enabling image manipulation

To enable image manipulation, the ImageMagick package needs to be installed. On many Linux distributions, it is already available. To check, try running the `convert` command, which is part of ImageMagick and usually found in `/usr/bin`

Installing OpenOffice

Within Alfresco, users can transform a document from one format to another. For example, they can transform a text file to a PDF file.

If you want Alfresco users to have access to transformation facilities, you must install OpenOffice. This is optional, and can be done any time after Alfresco is installed.

Downloading OpenOffice

➤ **To download OpenOffice**

1. Browse to <http://download.openoffice.org>
2. Download the OS X version.

Installing Open Office

1. Install OpenOffice.
2. Start one of the OpenOffice programs to do the initial registration.
3. Close OpenOffice.
4. Rename `/opt/alfresco/zstart_oo.sh` to `/opt/alfresco/start_oo.sh`
5. Edit `/opt/alfresco/start_oo.sh` and set the correct location for OpenOffice.

If the Alfresco server is running, stop and restart the server (refer to "Starting and stopping Alfresco", on page 25).

Installing WCM

If you plan to use WCM (Web Content Management), refer to "Installing WCM", on page 53.

6 JBoss on Mac OS X

The procedures in this chapter show you how to install Alfresco bundled with JBoss.

Note: This software is for evaluation purposes only and cannot be used against an existing Alfresco repository. There will not be an upgrade path from this candidate release to the final 2.0 release.

Prerequisites

The following instructions assume that you are familiar with OS X commands. If you do not have administrative privileges, you might need to prefix some of the commands with `sudo`

You must have Mac OS X 10.4 or above.

Installing JDK

If you have already downloaded any of the software discussed in this section, ignore the instructions and continue to the next step.

Downloading JDK

➤ **To download JDK 5.0**

1. Browse to the URL:

<http://www.apple.com/support/downloads>

2. Scroll down to the Java downloads.

You will be prompted to specify a location for the downloaded file.

Installing JDK

➤ **To install JDK**

1. Navigate to the location where you downloaded the JDK file.
2. Install the JDK.
3. Ensure that the `JAVA_HOME` variable is set correctly.

HSQL database

If you want to use HSQL, Alfresco is already pre-configured to use this database. No further action is needed, so you can continue to "Downloading and installing Alfresco".

If you want to use MySQL, refer to "Optional installation of MySQL", below.

For other databases, refer to the forums and wiki at www.alfresco.com

Optional installation of MySQL

Ignore this section if you want to use HSQL.

Downloading MySQL

➤ To download MySQL

1. Browse to the URL:

<http://dev.mysql.com/downloads/mysql/5.0.html>

This page has the heading:

MySQL 5.0 Downloads

2. There are several Mac OS X downloads available. Select the appropriate MySQL Max for your platform.
3. When you are prompted, specify a download destination.

Installing MySQL

Installation and configuration is done by an installation wizard, followed immediately by a configuration wizard.

➤ To install MySQL

1. Navigate to the location where you downloaded the MySQL file.
2. Install MySQL, using the **Typical** setup type.
3. You can skip the MySQL.com sign-up.
4. Configure MySQL using options that are appropriate for the required use.
 - For demo purposes, choose the default selected options.
 - For non-English or non-West European languages, choose UTF8 Character set.

Testing MySQL

It is very easy to test if MySQL is running correctly.

➤ **To test MySQL**

1. Open an operating system console.
2. Type `mysql -u root -p`
The system responds with `Enter password:`
3. Type the password that you specified above. Press ENTER.
If no errors are reported, then MySQL is installed and running.
4. To exit from MySQL, type `exit` at the `mysql>` prompt.

Installing Alfresco

Downloading Alfresco

➤ **To download Alfresco**

1. First, create a directory named `/opt/alfresco`
You will be downloading to this directory.
2. Enterprise customers should browse to the customer's or partner's portal.
This launches the Alfresco web client.
3. If you are in the **Guest Home** space, log out.
4. At the login screen, enter your user name and password.
This launches the Alfresco web client, in your home space.
5. Click **Company Home > Downloads > 2.0 Releases > 2.0.x**
6. Select the JBoss file for Linux:
alfresco-enterprise-jboss-2.0.x.tar.gz
You are asked to specify a location for the download.
7. Specify the `/opt/alfresco` directory that you created earlier.

Installing Alfresco

➤ **To install Alfresco**

1. Browse to the `/opt/alfresco` directory.
2. `tar` uncompress the file that you have just downloaded.

Setting paths

➤ To set paths

1. Edit `alfresco.sh`
2. Ensure that the variables are pointing to the location where JBoss is installed.

For the JBoss bundle, this will be:

```
/opt/alfresco/jboss
```

Optionally creating the MySQL database

Ignore this section if you want to use HSQL.

➤ To create the MySQL database

1. Navigate to `alfresco/extras/databases/mysql`
2. Run `db_setup.bat` <<check with Paul>>

If the setup is correct, a MySQL database will be created, having the following properties:

- Database name: `alfresco`
- Database user name: `alfresco`
- Database password: `alfresco`

Configuring the database connection and data locations

Ignore this section if you want to use HSQL.

Before starting Alfresco for the first time, you are recommended to configure the database connection and the location of data folders. Refer to the following sections in the *System Administration Guide*:

- "Customizing `dir.root`"
- "Customizing database properties"

If you want to use MySQL, you must delete or modify three files that are set to use HSQL. These files, in the `jboss/server/default/conf/alfresco/extension/` directory are:

- `custom-db-and-data-context.xml`
- `custom-db-connection.properties`
- `custom-hibernate-dialect.properties`

Starting and stopping Alfresco

➤ To start Alfresco

1. If you have chosen the MySQL database, then ensure that MySQL server is running.
2. Browse to the `/opt/alfresco` directory.
3. Run `alfresco.sh start`

➤ To try Alfresco

1. Browse to:
`http://localhost:8080/portal`
2. From the Page Menu, navigate to **Alfresco**
3. Maximize the portlet (icon at top right).

The server is configured with a single administrative login with user name and password both set to `admin`.

➤ To stop Alfresco

1. Browse to the `/opt/alfresco` directory.
2. Run `alfresco.sh stop`

Setting up the CIFS server

The CIFS Server is normally set up by each individual user, rather than by an administrator.

For information on setting up the CIFS server, refer to "Mapping an Alfresco space to a network drive" in the *Getting Started Guide*.

If the user is unable to map a network drive after following the instructions in the *Getting Started Guide*, try the following procedure.

➤ To check whether the CIFS server is running

- From a command prompt, enter the command `nbtstat -n`
One of the listed names should be the CIFS server name.

If you are unable to connect to the CIFS server, then depending on your network, you might need to configure the domain for CIFS to use.

➤ **To configure the domain for CIFS**

1. Ensure that the Alfresco server has been started at least once.

2. Open the file:

```
<alfresco>/jboss/server/default/conf/alfresco/extension/file-servers.xml
```

3. Add the domain to the end of the line:

```
<host name="${localname}_A"/>
```

For example:

```
<host name="${localname}_A" domain="MYDOMAIN"/>
```

4. Restart the Alfresco server for the change to take effect.

Enabling image manipulation

To enable image manipulation, the ImageMagick package needs to be installed. On many Linux distributions, it is already available. To check, try running the `convert` command, which is part of ImageMagick and usually found in `/usr/bin`

Installing OpenOffice

Within Alfresco, users can transform a document from one format to another. For example, they can transform a text file to a PDF file.

If you want Alfresco users to have access to transformation facilities, you must install OpenOffice. This is optional, and can be done any time after Alfresco is installed.

Downloading OpenOffice

➤ **To download OpenOffice**

1. Browse to <http://download.openoffice.org>

2. Download the OS X version.

Installing Open Office

1. Install OpenOffice.

2. Start one of the OpenOffice programs to do the initial registration.

3. Close OpenOffice.

4. Rename `/opt/alfresco/zstart_oo.sh` to `/opt/alfresco/start_oo.sh`

5. Edit `/opt/alfresco/start_oo.sh` and set the correct location for OpenOffice.

6. If the Alfresco server is running, stop and restart the server (refer to "Starting and stopping Alfresco", on page 25).

Installing WCM

If you plan to use WCM (Web Content Management), refer to "Installing WCM", on page 53.

7 WAR file on any platform

The procedures in this chapter show you how to install the Alfresco WAR file on your platform.

Installing JDK

If you have already downloaded any of the software discussed in this section, ignore the instructions and continue to the next step.

Downloading JDK

➤ **To download JDK 5.0**

1. Browse to the URL:

<http://java.sun.com/j2se/1.5.0/download.jsp>

2. Click the link for **JDK 5.0 Update 11** (or later).

A page with the following heading appears:

J2SE(TM) Development Kit 5.0 Update 11 (or later).

3. Scroll down. Accept the license agreement.
4. Click the link:

Windows Offline Installation, Multi-language

This is the download file with size ~59 MB. You will be prompted to specify a location for the downloaded file.

Installing JDK

➤ **To install JDK**

1. Navigate to the location where you downloaded the JDK file.
2. Double click on the filename

The installation proceeds automatically.

HSQL database

If you want to use HSQL, Alfresco is already pre-configured to use this database. No further action is needed, so you can continue to "Downloading and installing Alfresco".

If you want to use MySQL, refer to "Optional installation of MySQL", below.

For other databases, refer to the forums and wiki at www.alfresco.com

Optional installation of MySQL

Ignore this section if you want to use HSQL.

Downloading MySQL

➤ To download MySQL

1. Browse to the URL:

<http://dev.mysql.com/downloads/mysql/5.0.html>

This page has the heading:

MySQL 5.0 Downloads

2. Download the appropriate package for your platform.
3. When you are prompted, specify a download destination.

Installing MySQL

Installation and configuration is done by an installation wizard, followed immediately by a configuration wizard.

➤ To install MySQL

1. Navigate to the location where you downloaded the MySQL file.
2. Install MySQL, using the **Typical** setup type.
3. You can skip the MySQL.com sign-up.
4. Configure MySQL using options that are appropriate for the required use.
 - For demo purposes, choose the default selected options.
 - For non-English or non-West European languages, choose UTF8 Character set.

Testing MySQL

It is very easy to test if MySQL is running correctly.

➤ **To test MySQL**

1. Open an operating system console.
2. Type `mysql -u root -p`
The system responds with `Enter password:`
3. Type the password that you specified above. Press ENTER.
If no errors are reported, then MySQL is installed and running.
4. To exit from MySQL, type `exit` at the `mysql>` prompt.

Downloading and installing Alfresco

Deleting previous web client files

If you deployed the `war` file previously, then you must delete the web-client files before deploying the new WAR file.

Note: Back up any of your customized configuration files.

If the previous release was PR6 or later:

- Delete `<tomcat-home>/webapps/alfresco.war`
- Delete `<tomcat-home>/webapps/alfresco`
Ensure your previous customizations are copied.
- Delete `<tomcat-home>/work/alfresco`

Downloading Alfrescod

➤ **To download Alfresco**

1. Enterprise customers should browse to the customer's or partner's portal.
This launches the Alfresco web client.
2. If you are in the **Guest Home** space, log out.
3. At the login screen, enter your user name and password.
This launches the Alfresco web client, in your home space.
4. Click **Company Home > Downloads > 2.0 Releases > 2.0.x**
5. Download the WAR bundle that is appropriate for your platform.
You are asked to specify a location for the download.

Installing Alfresco

➤ To install Alfresco

1. In a new folder or directory, unzip the file that you have just downloaded.
2. Copy the `alfresco.war` file to the appropriate location for your application server.

Note: If you have deployed previous versions of Alfresco, you might want to remove any temporary files created by your application server.

Adding additional required libraries

You must add some additional libraries to the container's endorsed JAR files. Currently, this is only required for WCM functionality, but might be needed for future Alfresco releases.

➤ To add additional libraries

- Copy the JAR files from `<alfresco>/endorsed` into `<container common>/endorsed`

For example, `tomcat/common/endorsed`

Adding MySQL database connector

➤ To add MySQL database connector

1. Browse to the URL:
`http://dev.mysql.com/downloads/connector/j/`
2. Download the MySQL Java Database Connector.
3. Copy the JAR file into `<container>/common/lib` or `<container>/server/default/lib`

Creating the MySQL database

Alfresco requires a MySQL database named `alfresco` with a user account and password of `alfresco`.

To do this manually, load the `db_setup.sql` file into MySQL. For example:

```
mysql -u root -p <db_setup.sql
```

Configuring the database connection and data locations

Before starting Alfresco for the first time, you are recommended to configure the database connection and the location of data folders. Refer to the following sections in the *System Administration Guide*:

- "Customizing `dir.root`"
- "Customizing database properties"

Trying Alfresco

Start your application server. You can try Alfresco by visiting:

`http://localhost:8080/alfresco`

The server is configured with a single administrative login with user name and password, both set to `admin`.

Setting up the CIFS server

The CIFS Server is normally set up by each individual user, rather than by an administrator.

For information on setting up the CIFS server, refer to "Mapping an Alfresco space to a network drive" in the *Getting Started Guide*. In addition to that information, you must ensure that the `win32NetBIOS.dll` in `c:\alfresco\bin` is copied into a folder on the system path, such as `c:\windows\system32`. Restart the Alfresco server after copying the `dll` file.

To access the CIFS repository directly from FireFox, you must install the Alfresco FireFox extension from here:

`http://sourceforge.net/projects/alfresco`

Internet Explorer does not need the extension to open CIFS folders directly.

If the user is unable to map a network drive after following the instructions in the *Getting Started Guide*, try the following procedure.

➤ To check whether the CIFS server is running

- From a command prompt, enter the command `nbtstat -n`

One of the listed names should be the CIFS server name.

If you are unable to connect to the CIFS server, then depending on your network, you might need to configure the domain for CIFS to use.

➤ **To configure the domain for CIFS**

1. Ensure that the Alfresco server has been started at least once.

2. Open the file:

```
<config>/alfresco/extension/file-servers.xml
```

3. Add the domain to the end of the line:

```
<host name="${localname}_A"/>
```

For example:

```
<host name="${localname}_A" domain="MYDOMAIN"/>
```

4. Restart the Alfresco server for the change to take effect.

Enabling image manipulation

Enabling image manipulation on a Windows platform simply means adding the appropriate path to the Windows PATH variable, to allow Windows to find the **imconvert.exe** file.

➤ **To enable image manipulation on Windows**

- Add the following path to the Windows PATH variable (refer to "Adding folder paths to the Windows Path variable" on page 11):

```
c:\alfresco\bin
```

On a Linux platform, create a symbolic link named `imconvert` to the `convert` executable.

Installing OpenOffice

Within Alfresco, users can transform a document from one format to another. For example, they can transform a text file to a PDF file.

If you want Alfresco users to have access to transformation facilities, you must install OpenOffice. This is optional, and can be done any time after Alfresco is installed.

Installing OpenOffice

➤ **To install OpenOffice**

1. Browse to:

```
http://download.openoffice.org
```

2. Download the appropriate version for your platform.

3. To work with Alfresco, start OpenOffice as follows (which should be all on one line):

```
soffice "-accept=socket,host=localhost,port=8100;urp;StarOffice.ServiceManager"
```

`-nologo -headless`

Installing WCM

If you plan to use WCM (Web Content Management), refer to "Installing WCM", on page 53.

8 Installing WCM

The procedures in this chapter show you how to install WCM (Web Content Management) to work with Alfresco on any platform.

Downloading and installing WCM

Downloading WCM

➤ **To download WCM**

1. Enterprise customers should browse to the customer's or partner's portal.
This launches the Alfresco web client.
2. If you are in the **Guest Home** space, log out.
3. At the login screen, enter your user name and password.
This launches the Alfresco web client, in your home space.
4. Click **Company Home > Downloads > 2.0 Releases > 2.0.x**
5. Select the file:
alfresco-enterprise-wcm-2.0.0.zip
or:
alfresco-enterprise-wcm-2.0.0.tar.gz
You are asked to specify a location for the download.
6. Specify the Alfresco home directory.
For example, **C:\Alfresco** or **/opt/alfresco**

Installing WCM

➤ **To install WCM**

1. Browse to the Alfresco home directory.
2. Unzip the file that you have just downloaded.
If your unzip program asks about existing directories, you can allow this because only new filenames are provided, so no existing files will be overwritten.

3. In the root of the Alfresco home directory, you will see a file:
`wcm-bootstrap-context.xml`
4. Copy this file to the Alfresco extension directory.
For tomcat, the extension directory is:
`tomcat/shared/classes/alfresco/extension`
For JBoss, the extension directory is:
`jboss/server/default/conf/alfresco/extension`
5. Restart the Alfresco server for the WCM bootstrap to take effect.
You can verify the success of the bootstrap in `alfresco.log`, which is in the Alfresco home directory.

Checking WCM functionality

If the WCM bootstrap was successful, you will see two additional spaces in your Alfresco repository:

- **Web Projects** in **Company Home**
- **Content Forms** in **Data Dictionary**

Using the website preview feature

- **To use the website preview feature**
 - Start the Alfresco virtualization server.
On Windows run `virtual_start.bat`
On Linux run `sh virtual_alf.sh start`

9 Troubleshooting during installation

If you have installation problems, you can find help on the Installation forum at:

<http://www.alfresco.org/forums>

Most installation issues are resolved in this forum article:

<http://www.alfresco.org/forums/viewtopic.php?t=7>

Some issues that we have seen previously are discussed in the following topics.

JAVA_HOME

The `JAVA_HOME` variable must be set correctly for your Java5 installation.

Image Magick

You might see the following errors are reported on the console:

```
ERROR [AbstractImageMagickContentTransformer]
JMagickContentTransformer not available:
ERROR [AbstractImageMagickContentTransformer]
ImageMagickContentTransformer not available:
Failed to execute command: imconvert ...
```

These issues will not cause the server to fail. Alfresco is simply reporting that external document transformation engines are not available for use by the server. You have a choice of solutions:

- Follow the instructions at the bottom of the Release Notes Wiki page:

http://www.alfresco.org/mediawiki/index.php/Preview_Release_5

- If you don't need the transformation references, remove them:

<http://www.alfresco.org/forums/viewtopic.php?t=90>

FTP Socket error

You might see this error on server startup:

```
ERROR [protocol] FTP Socket error
java.net.BindException: Address already in use: JVM_Bind at
java.net.PlainSocketImpl.socketBind(Native Method)
```

Check to see if you have any services running against port 8080 for the Alfresco server or port 21 for the Alfresco FTP integration.